



# ***Community News***

**1ST QUARTER 2009**

## **Year 2008 ended with carol singing**

The 2008-year ended for the Dallington Residents Association on Thursday, 4 December with a Community Christmas Celebration at the Halberg Street Reserve. A good crowd gathered on a fine evening and carol singing, introduced by Richard Alderson and led by a Linwood Salvation Army brass group, was enjoyed by all. Children took great delight in the presence of the Balloon Man and his bouncy castle. Face painting was a bonus. Dallington Scouts manned a BBQ and provided the outdoor seating. Keep this event in mind for the end of this year (probably Thursday, 3 December). Your presence will be welcome.

## **Pending committee meeting dates**

The Dallington Residents' Association Committee meets in the Community Centre at 6.30pm on the second Tuesday of each month. This means that forthcoming meetings are scheduled for 10 March, 14 April, 12 May.

An Annual General Meeting will be held on Tuesday, 26 May during which the year's activities will be reviewed and committee members elected and confirmed. Officers will be appointed at the first meeting of the incoming committee. Residents are encouraged to plan to attend this meeting.

**This Community News is published quarterly by the Dallington Residents' Association with the help of the Shirley Service Centre. Contributions and queries should be forwarded to the Editor (Bill Allott), Dallington Community News, 5 Locksley Avenue, Christchurch 8061 (Tel. 389 1816).**

## **Car travel still popular**

Dallington is very well served by \*Metro bus services. It's therefore interesting to note that we are still very car dependent. According to the 2006 Census, of a total of 1,722 people in employment on census day, 78 worked at home while 222 did not go to work that day. Of the remaining 1,422 who did travel to work, 873 drove by private car, 192 drove in a company vehicle, while 57 were passengers in a private or company vehicle. Only 69 travelled by public bus. The balance was made up by 15 who travelled by motor or power cycle, 99 by bicycle and 36 who walked or jogged. There were 81 not included in this analysis.

Will there be a change in the next census in response to the introduction of free bus travel for over 65 year-olds in non-peak periods, and higher fuel prices? We can only wait and see, but anecdotally, buses have been more crowded and bicycle usage seems to be increasing.

\*(Along Dallington's northern boundary are routes 70 (Queenspark-City), 5 (Southshore-Hornby) and Metrostar (New Brighton-Hoon Hay); its western boundary is served by route 60 (New Brighton-City); its southern boundary by route 84 (New Brighton-Hornby) at the Dallington Bridge; while the Orbiter and route 83 (New Brighton-Hei Hei) both pass through the suburb.)

## **Schedule for News**

The current publication schedule for the Dallington Community News is:

- 2nd Quarter Deadline 1/5/09  
Distribution 20/5/09
- 3rd Quarter Deadline 7/8/09  
Distribution 26/8/09
- 4th Quarter Deadline 6/11/09  
Distribution 25/11/09

Please note that this schedule could alter in the course of the year.

## **Walkway progress**

It's been pleasing to see the development of a small rose garden around two seats and a picnic table at the Avonview end of the river walkway. This seat overlooks the turning pond for boats at the finish of the Kerrs Reach rowing course.

An extension of the river walkway is scheduled for completion before the end of June this year.

## **DALLINGTON RESIDENTS' ASSOCIATION**

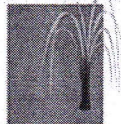
**Chairperson:** Anton Korunic (942 8692)  
**Secretary:** Beryl Starr (Tel. 385 1457)  
**Treasurer:** Mary Tamplin. (Tel. 385 1044)  
**Members:** Barbara Seaton, Bill Allott, Tony Winder  
John Mulvaney, Phillip Haythornthwaite, Selwyn Eagle  
Richard Alderson  
**Community Board Representative:** Linda Stewart



## Avonview Retirement Village

With independent studios and apartments together with a 44-bed rest home we can provide a high level of care and security

Avonview



Retirement Village

Come in and inspect at any time.

105 Locksley Ave.  
Tel. 389 7131

## BAMBI DRAPERY & SCHOOL UNIFORMS

PRIMARY, INTERMEDIATE AND HIGH SCHOOL QUALITY UNIFORMS AT LOW PRICES. CAN BE MADE TO MEASURE. LAYBY NOW.

WIDE RANGE OF KNITTING WOOLS AND SEWING SUPPLIES.

WHY GO ACROSS TOWN?  
CHECK WITH US FIRST.

Cnr. Woodham Rd. and  
Gloucester St. Ph. 389 9583

## GAYHURST MART

The corner store on the  
McBratneys/Gayhurst  
Road roundabout

Open seven days a week.  
Phone Jim on  
**Tel. 385 1394.**

## Burwood Park Tennis Club

Cresswell Avenue  
Seniors: Alice 383-3876  
Juniors: Viv 381-6585

Why are  
we the  
best tennis  
club in the  
city?  
Join now.

- We have friendly, social and competitive members, catering for all ages and abilities.
- We have modern clubrooms and facilities with seven courts, astrograss and plexipave.
- We have lights for nighttime tennis.

**\$150  
NEW  
MEMBER**

## COMMUNITY NOTICES

### OSCAR

An out-of-school care and recreation programme for five to 13 year olds at Banks Avenue Primary School. If interested, please telephone Christine on 027 438 2604.

### Dallington Townswomen

This group meets at the Burwood Park Tennis Pavilion at 1.30pm on the fourth Thursday each month. For further details ring Ina (Tel. 385 4487).

### Dallington Friends

A group for all ages, called "Dallington Friends", meets on the third Tuesday each month at 1.30pm at the Biddick Court Hall in Claydon Place. For more information contact Shirley on Tel. 385 3843, Joy Smith on Tel. 385 3745, call in to the Community Centre or come along (gold coin donation).

### Walking Group

A walking group meets outside the Community Centre/Shop every Monday at 10.00am. Walks are arranged in the local area and last about an hour. To join this group all you have to do is turn up.

### Art Classes

Every Monday 1.00pm to 3.00pm at Biddick Court in Claydon Place. For more information please ring Jayne on Tel. 942 1239.

### Scouting

The scout den in Halberg Street is the venue for the following scouting activities. New members are welcome.  
Keas (6-8 yrs) Wed. 6.15-7.15pm  
Cubs (8-10.5 yrs) Thurs. 6.30-8 pm  
Scouts (10.5-15 yrs) Mon. 7-9 pm  
Venturers (14.5-18 yrs) Tue. 7-9 pm  
For more details email  
[chris.chapman@harcourts.co.nz](mailto:chris.chapman@harcourts.co.nz)

### Shirley Service Centre

For community information and details of City services your local Christchurch City Council Services Centre is located in the Library at 36 Marshlands Road by *The Palms*. Tel. 941 8999

## You're welcome at Dallington Friends

At the time of writing the "Dallington Friends" group was planning to begin 2009 with a picnic at the Groynes on Tuesday, 17 February when this year's programme was to be planned. This club had a busy time last year with outings, meals together, and activities at Biddick Court. Anyone is welcome to join in and enjoy the opportunity of making new friends. See the above community notice for contact details.

## DALLINGTON COMMUNITY CENTRE / SHOP

Time on your hands? Kids back to school? Holidays over? Visitors gone?

You want to do something different - maybe to get to know people in the area or make new friends?

Being a volunteer helper in our craft shop is a great way and new helpers are needed. Do you make something you would like to sell? Or maybe you could just be available when we ring? New sellers are always welcome.

We have a fantastic team working in the shop and you could be a part of it. Take a step in our direction. "You'll be glad you do".

We also have a walking group leaving from the shop on Monday mornings at 10.00am. Our friendship group meets on the 3rd Tuesday of each month for outings and fun times. There is also an art class on Mondays.

Where are we? We're at the roundabout corner of McBratneys Road & Gayhurst Road.

Either call and meet us (we are open each week day from 10.30 till 4.30) or phone one of the following:

- Jan for the craft shop, Tel. 942 6825
- Shirley for the friendship group, Tel. 385 3843
- Jayne for the art group, Tel. 942 1239
- Anton for the walking group, Tel. 942 8692

**Drop into the Community Centre and see for yourselves. We will look forward to greeting you!**

Thank you to our advertisers for their help with costs.

Some additional copies of this Community News are available at the Community Centre/Shop.

The Dallington Residents' Association Committee meets in the Community Centre at 6.30pm on the second Tuesday of each month.



# Grocer a first day pupil at St Paul's

Ray Musson was born in the Dallington/Linwood area in 1927. His parents probably lived in Wyon Street at the time. The family later moved to houses in Norwich Street, Linwood Avenue and Woodham Road. Ray currently lives with his wife, Norma, in Sutton Place. They've been there for 20 years. There were only eight houses there when they moved in.

Their early memories of Dallington are of a country area with dairy farms and market gardens.

Ray started school at Linwood Avenue School but then moved with his five brothers to St Paul's Catholic School when it opened in Gayhurst Road in 1935. The parish priest was Father O'Regan and he used to bike from New Brighton. The school started as a full primary school with about 35 – 40 pupils. It catered for both boys and girls but the boys were transferred to the Marist Brothers School in Barbados Street when they had completed standard four. Ray says, "The boys were probably too much for the sisters." The first teachers at St Paul's were two Catholic sisters who used to travel by tram from the convent in Ferry Road to the terminus at Dallington Bridge. Ray recalls that he and his brother would often meet them to carry their books to the school. The diesel buses that replaced trams on this route, in 1936, were some of the first used in Christchurch.

Ray left the Marist Brothers School at the end of standard six and started work at a local grocery shop in Gloucester Street. This was one of 250 shops that formed the *Self Help* chain in New Zealand. Ray eventually transferred to other *Self Help* shops and later became a relieving manager. In this role he managed shops throughout Christchurch and as far afield as Ashburton and Timaru. He said that if a manager was sick or had suffered an accident, like cutting a finger in a bacon machine, he'd be called on to help out. He also relieved managers taking holidays.

After 12 years with *Self Help* Ray bought his own shop at Aranui. Af-

ter a few years he linked up with a friend from St Paul's School, Bill Henderson, and in partnership they bought an opposition grocery shop, over the road from *Aranui Store*, and it was called *Musson's General Store*. When supermarkets started to appear Ray and Bill bought one in Sumner. They later owned a grocery shop that is now a dairy on the corner of Woodham Road and Gloucester Street.

When questioned about supermarkets taking over the grocery trade, Ray said, "They're definitely not giving the service we used to give. We had a chap go round in a van to call for orders that we would make up at the shop and then deliver at no extra cost that same day. We also gave credit, which is not done today for grocery items. We got to know the customers personally. If there was a bereavement in a family we'd be called upon to provide groceries, particularly when no money was coming in for a while. People who entered our shops were served at a

counter and didn't have to select items for themselves."

Over the years Ray has served on various committees at St Paul's Catholic Church and also at the school. He was called on as a grocer to help out at school picnics and fund-raising events. When his children were young he was also involved with scouting and in particular with providing food and transport for outings.

Twenty years ago heart problems brought about Ray's retirement from business and curtailed his playing days with the Linwood Bowling Club. Indoor bowls at St Paul's was another interest.

Ray and Norma were married at St Paul's 59 years ago. There were six boys in Ray's family and he and Norma also had six children, four boys and two girls. Four of their children live in Christchurch while one is in Australia and the other in England. They have 14 grandchildren and three great grandchildren.



trade aid

## CLEARANCE SALE 17 & 18 APRIL 2009

Up to 95% off normal retail price

- |                    |                 |
|--------------------|-----------------|
| • Ethnic crafts    | Product samples |
| • End of lines     | Jewellery       |
| • Textiles         | Homeware        |
| • Ceramics         | Soapstone       |
| • and much more... |                 |

All products are made by our global producer partners and you can be guaranteed they have received a fair price.

174 Gayhurst Road, Dallington

Friday 17 April, 8:30AM–4:30PM

Saturday 18 April, 8:30AM–3PM

BUILDING JUST AND SUSTAINABLE COMMUNITIES THROUGH FAIR TRADE



## Play equipment promotes adult fitness

The pictures on the right are of fitness machines installed at Wycla Park, Manurere Street, Hei Hei. This equipment is designed for use by people 12 years and over and can safely be used by seniors.

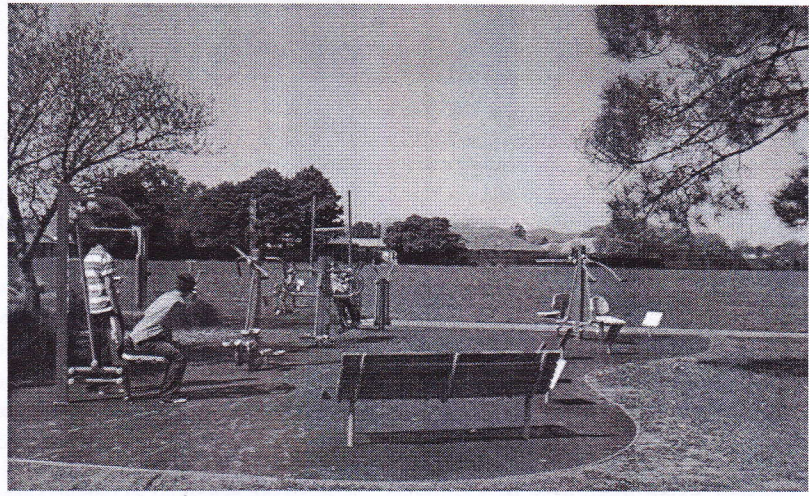
A similar installation in Manchester, England is being promoted as a playground for the over-sixties but our City Council has decided to broaden usage in its trial installation at Wycla Park. This would also be its intention for future installations but one criteria for choosing localities is those expected to have a high growth in their elderly population.

The Dallington Residents' Association has been considering the possibility of such equipment being installed in its locality and its proposal would be enhanced if it could indicate a level of community interest. Hence readers are encouraged to complete the response sheet below and return it before the next meeting of the Residents' Association Committee on Tuesday, 10 March.

Eight pieces are in place at Wycla Park. They are identified as a

- butterfly press,
- stepper,
- ab-hip swinger,
- cross trainer,
- shoulder press / lat pull down
- cycle seat,
- ezy rider,
- rowing machine.

Each piece of equipment has a board describing its use. It is hoped that this kind of installation will encourage adults to become more active and to make better use the city's parks.



### Dallington Residents' Association Adult Fitness Equipment Proposal

I would welcome the installation of this equipment at a park in our locality? Yes / No

Any additional comment: .....

Signed: ..... Print Name ..... Tel. No. ....

Please return to: Bill Allott, 5 Lockslev Avenue, Dallington before 10 March 2009.